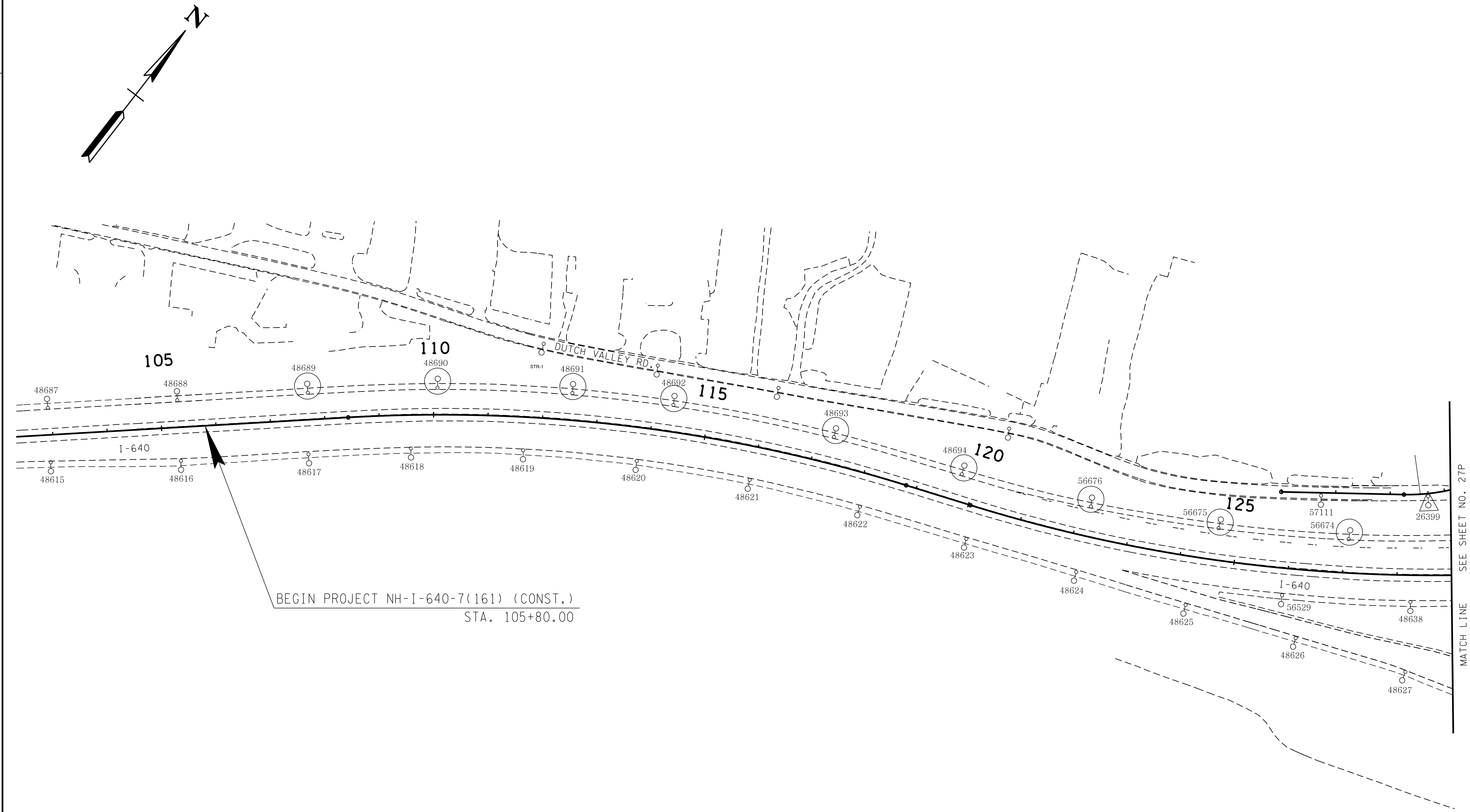



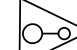
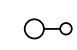
TYPE	YEAR	PROJECT NO.	SHEET NO.
CONST.	2016	NH-I-640-7(161)	270

KNOX CO.  
47008-3150-44 (CONST.)  
REV. 01-15-16: ADDED SHEET TO PLANS.


I-640



STREET LIGHT REMOVALS

- LEGEND
-  EXISTING STREET LIGHT TO BE REMOVED
  -  EXISTING STREET LIGHT TO BE REMOVED BY OTHERS
  -  EXISTING STREET LIGHT TO REMAIN

SEALED BY



COORDINATES ARE NAD/83(1995),  
ARE DATUM ADJUSTED BY THE  
FACTOR OF 1.0001 AND TIED TO  
THE TGRN. ALL ELEVATIONS ARE  
REFERENCED TO THE NAVD 1988.

STATE OF TENNESSEE  
DEPARTMENT OF TRANSPORTATION

# LIGHTING LAYOUT I-640

SCALE: 1"= 100'